

# BPW code number designations

Type designation, code number designation  
for BPW Trailer axles and suspensions





BPW-Sachnr. 39341401e

**BPW is a globally leading manufacturer of intelligent running gear systems for trailers and semi-trailers. As an international mobility and system partner, we offer a wide range of solutions for the transport industry from a single source, from axle to suspension and brake to user-friendly telematics applications.**

**We thereby ensure outstanding transparency in loading and transport processes and facilitate efficient fleet management. Today, the well-established brand represents an international corporation with a wide product and service portfolio for the commercial vehicle industry. Offering running gear systems, telematics, lighting systems, composite solutions and trailer superstructures, BPW is the right system partner for automotive manufacturers.**

**BPW, the owner-operated company, consistently pursues one target: To always give you exactly the solution which will pay off. To this end, we focus our attention on uncompromising quality for high reliability and service life, weight and time-saving concepts for low operating and maintenance costs as well as personal customer service and a close-knit service network for quick and direct support. You can be sure that with your international mobility partner BPW, you always use the most efficient method.**

# Your partner on the path to economic viability



**BPW Bergische Achsen Kommanditgesellschaft**

Postbox 12 80 · 51656 Wiehl, Germany · Phone +49 (0) 2262 78-0  
info@bpw.de · [www.bpw.de](http://www.bpw.de)

# BPW Type and code number designations

## Inhaltsverzeichnis

◎ 1.	<b>BPW Type and code number designations.....</b>	<b>Page 2 - 3</b>
1.1	Type plate	Page 3
◎ 2.	<b>Explanation of BPW axle type codes .....</b>	<b>Page 4 - 9</b>
2.1	Trailer axles / Steering axles	Page 4 + 5
2.2	Air suspensions	Page 6 + 7
2.3	Mechanical suspensions	Page 8 + 9
◎ 3.	<b>Explanation of BPW code numbers .....</b>	<b>Page 10 - 14</b>
3.1	Trailer axles and suspensions	Page 10 - 14

Valid: **1.8.2014**

This list explains the BPW type designations and the BPW code number system for BPW trailer axles, steering axles and axle suspensions.

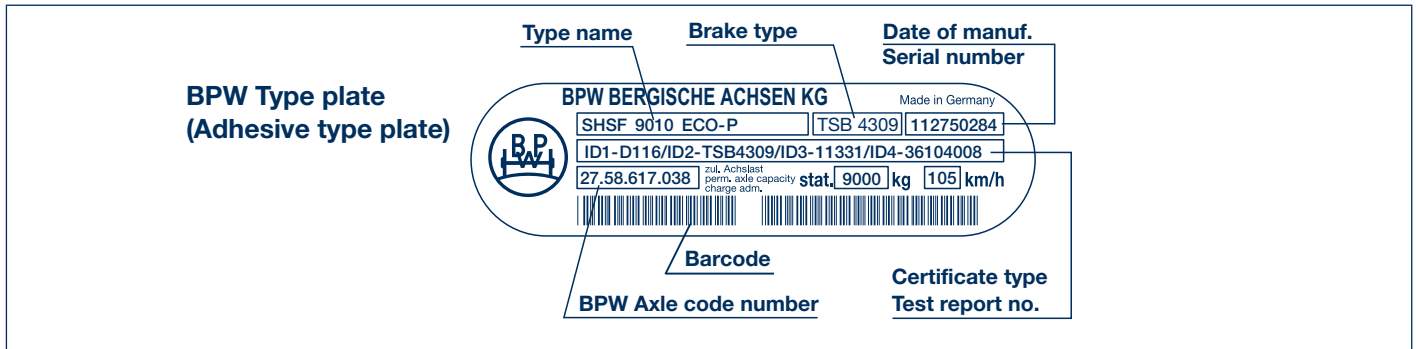
Current versions and additional informations can be found online at [www.bpw.de](http://www.bpw.de).

Subject to change (without notice).

---

# BPW Type and code number designations 1

## BPW Type plate 1.1



BPW Type designations	Example:
The BPW type name is composed of a letter group and a number group.	<b>SHSF 9010 ECO-P</b>
The letter group identifies the type of axle and suspension version as well as defining the hub version.	<b>SHSF</b> - BPW axle series <b>SH</b> for single wheels (without offset), wheel studs M 22 x 1.5, <b>without</b> wheel nuts
The number group specifies the axle load on the ground in kilogrammes and the number of wheel studs per wheel hub (for disc wheel connection).	<b>9010</b> - <b>9000</b> kg axle load - <b>10</b> wheel studs per wheel
The group of letters at the end of the model name defines the type of hub bearing.	<b>ECO-P</b> - <b>ECO<sup>Plus</sup></b> bearing generation
You can view the brake certificate referenced by certificate type/test report number on the type plate by logging onto the BPW website at <a href="http://www.bpw.de">www.bpw.de</a> (Download Centre in the German version of the website - „Bremsgutachten“).	e.g. <b>D116/.../36104008</b> - <b>D116</b> Certificate type - <b>36104008</b> Test report no.

Further type plates:

**Riveted type plate**

Exec. prior to 1981

Exec. prior to 1999

The BPW axle code number is shown on the type plate.

If this is missing or no longer legible, the BPW axle number can be read off the front end of the axle stub in most cases.

In steering axles and ECO Plus 2 bearings, there is no code number embossed on the front end of the stub.

**BPW axle beam welding number**

**BPW axle code number punched into the front end of the axle stub**

**Adhesive type plate**

Exec. prior to 2/2004

Exec. prior to 10/2006

Where the axle beam welding number is indicated, the axle can also be identified. See also BPW Internet application for spare part lists for commercial vehicles.

## 2 Explanation of BPW axle type codes

### 2.1 Trailer axles / Steering axles (extract)

Example:										
H	S	F	A	H	LL	9010	12°	ECO Plus 2		
		Axle series		Axle beam		Brake		Tyre		Year of manuf.
E										
EH										- 1981
H								SN 420	20 - 24"	1982 -
R										1982 -
M										1982 -
KH										1988 -
KM								SN 360	19.5"	1985 -
KR										1985 -
KRD										1985 -
NH										1993 -
NR								SN 300	15/17.5"(12")	1982 -
NRD										1982 -
NM										1982 -
SH								SB 4345	20 - 24"	1996 - 2010
								SB 4309	22.5"	2003 - 2010
								TSB 4312	20 - 24"	2010 -
								TSB 4309	22.5"	2010 -
SKH								SB 3745	19.5"	1998 - 2010
								TSB 3709	19.5"	2010 -
SKM								SB 3745	19.5"	1998 - 2010
								TSB 3709	19.5"	2010 -
ZR								SN 300	15/17.5"(12")	1967 - 1982
ZZ										(- 1982)
<b>Wheel execution</b>										
B										for single wheels, wheels with offset
S										for single wheels, wheels without offset
Z										for twin wheels
I										Wheel spiders for Trilex wheel rims; single wheels
IZ										Wheel spiders for Trilex wheel rims; twin wheels
F										Wheel studs M 22x1.5 without wheel nuts; order wheel nuts for stud or spigot alignment separately
M										for spigot alignment / Alloy wheels

# Explanation of BPW axle type codes **2**

## Trailer axles / Steering axles (extract) **2.1**

Example:										
<b>H</b>	<b>S</b>	<b>F</b>	<b>A</b>	<b>H</b>	<b>LL</b>	<b>9010</b>	<b>12°</b>	<b>ECO Plus 2</b>		
			<b>A</b>						with alloy hub	
				<b>(D)</b>					( German „Dauerbremse“ approval StVZO regulation 41 para 14 ) - 1990	
				<b>H</b>					for hanging boosters	
					<b>L</b>				Power steering axle	Steering angle max. 45°
					<b>LL</b>				Self steering axle, series <b>LL</b>	Steering angle max. 27°
					<b>LS</b>				Self steering axle, series <b>LS</b>	Steering angle max. 20°
					<b>P</b>				Swivel axle	
					<b>ST</b>				Stub axle	
						<b>6006 to 20010</b>			Axle load + quantity of wheel studs per hub	
							<b>-15</b>		Axle beam-wall thickness, e.g. 15 mm	
							<b>-1</b>		Type of hub bearing (e.g. 14t)	
							<b>/3</b>		Wheel connection - 10 wheel studs, pitch circle 335 mm (only K..)	
							<b>/12° to /40°</b>		Steering angle of steering axle	
									<b>Hub bearing execution</b>	
							<b>ECO</b>		BPW trailer axle with ECO Unit	
							<b>ECO-MAXX</b>		Weight-optimized BPW trailer axle with ECO Unit	
							<b>ECO<sup>Plus</sup></b>		Weight-optimized BPW trailer axle with ECO <sup>Plus</sup> Unit	
							<b>ECO Plus 2</b>		Weight-optimized BPW trailer axle with ECO Plus 2 Unit	
							<b>MAXX</b>		Weight-optimized BPW trailer axle with konv. hub bearing system	



# Explanation of BPW suspension type codes **2**

## Air suspensions (extract) **2.2**

Example:										
HSF	ALO	A	LL	3/	9010	/12°	E	F30	ECO Plus 2	
										<b>Execution hanger brackets</b>
<b>A</b>										Alloy hanger bracket
<b>C</b>										With C-beam
<b>D</b>										Hanger bracket with top plate
<b>E</b>										Hanger bracket without top plate
<b>K</b>										Bolt-on bracket
<b>S</b>										Taper mounted hanger brackets (70 mm wide)
<b>T</b>										with beam (draw axle)
<b>V</b>										Adjustable hanger bracket
<b>X</b>										Stainless steel hanger bracket
<b>Y</b>										Without mounted hanger brackets, hanger brackets separate
										<b>Air bag execution</b>
<b>30</b>										Air bag      Ø 300 mm, for stroke 200 mm (normal)
<b>30-1</b>										Ø 300 mm, for stroke up to 340 mm
<b>30 K</b>										Ø 300 mm, for stroke 150 mm
<b>36</b>										Ø 360 mm, for stroke 200 mm (normal)
<b>36-1</b>										Ø 360 mm, for stroke up to 340 mm
<b>36-2</b>										Ø 360 mm, for stroke up to 450 mm
<b>36 K</b>										Ø 360 mm, for stroke 180 mm
<b>F30</b>										Ø 300 mm, central on the trailing arm
<b>G</b>										Air bag with split piston
<b>Z</b>										Air bags loose, separately
										<b>Hub bearing execution</b>
<b>ECO</b>										BPW trailer axle with ECO Unit, 1996 (1998) -
<b>ECO-MAXX</b>										Weight-optimized BPW trailer axle with ECO Unit, - 2003
<b>ECO<sup>Plus</sup></b>										Weight-optimized BPW trailer axle with ECO <sup>Plus</sup> Unit , 2003 -
<b>ECO Plus 2</b>										Weight-optimized BPW trailer axle with ECO Plus 2 Unit, 2007 -
<b>MAXX</b>										Weight-optimized BPW trailer axle with konv. hub bearing system



## 2 Explanation of BPW suspension type codes

### 2.3 Mechanical suspensions (extract)

Example:										
HSF	VB	U	LL	3/	9010	/12°	M	ECO Plus 2	ECO Cargo	
H..										see explanation of axle type codes page 4 / 5
K..										
N..										
a.o.										
										<b>Suspension series</b>
VA										<b>VA</b> Mechanical suspension with leaf springs mounted on movable bearings, with mechanical braking load compensation
VB										<b>VB</b> Mechanical suspension without braking load compensation, leaf springs above the axle
VBN										<b>VBN</b> Mechanical suspension without braking load compensation, leaf springs above the axle, low design
VBT										<b>VBT</b> As above, but leaf springs below the axle
VG										<b>VG</b> Mechanical suspension without braking load compensation, leaf springs above the axle, with cast supports
VGT										<b>VGT</b> As above, but leaf springs below the axle
VK										<b>VK</b> Mechanical suspension with mechanical braking load compensation via torque arm arrangement on the equalizer, leaf springs above the axle
VKT										<b>VKT</b> As above, but leaf springs below the axle
VH										<b>VH</b> Suspension with hydraulic braking load compensation and optional auxiliary pneumatic springs, leaf springs above the axle.
VHT										<b>VHT</b> As above, but leaf springs below the axle
VN										<b>VN</b> Mechanical suspension with mechanical braking load compensation via pull rods
SS										<b>SS</b> Schmitz self-tracking suspension system
W										<b>W</b> Tandem axle assembly, rigid, with two-leaf springs and support axle, bearing blocks between the leaf springs
BW										<b>BW</b> Tandem axle assembly, rigid, with two-leaf springs and support axle, bearing blocks above the leaf springs, with bronze bushes
GW										<b>GW</b> Tandem axle assembly, rigid, with two-leaf springs and support axle, bearing blocks above the leaf springs, with rubber bushes
U										with U-stabilizer
Q										with rectangular section stabilizer
L										with power steering axle, series <b>L</b> Steering angle max. 40°
LL										with self steering axle, series <b>LL</b> Steering angle max. 27°
LS										with self steering axle, series <b>LS</b> Steering angle max. 20°
-										Single axle
2/										Tandem axle suspension
3/										Tri-axle suspension
6006 to 20010										Axle load + quantity of wheel studs per hub
						/12° to /40°				Steering angle of steering axle

# Explanation of BPW suspension type codes **2**

## Mechanical suspensions (extract) **2.3**

Example:										
HSF	VB	U	LL	3/	9010	/12°	M	ECO Plus 2	ECO Cargo	
									<b>Exec. index</b>	
							<b>B</b>		<b>B</b>	reinforced
							<b>BE</b>		<b>BE</b>	reinforced, equalizer bearing with bronze bushes
							<b>C</b>		<b>C</b>	
							<b>HD</b>		<b>HD</b>	Heavy-Duty-execution
							<b>HDE</b>		<b>HDE</b>	Heavy-Duty-execution, equalizer bearing with bronze bushes
							<b>E</b>		<b>E</b>	Equalizer bearing with bronze bushes
							<b>K</b>		<b>K</b>	
							<b>KE</b>		<b>KE</b>	Equalizer bearing with bronze bushes
							<b>KN</b>		<b>KN</b>	low design
							<b>L</b>		<b>L</b>	reinforced
							<b>LE</b>		<b>LE</b>	reinforced, equalizer bearing with bronze bushes
							<b>M</b>		<b>M</b>	reinforced
							<b>ME</b>		<b>ME</b>	reinforced, equalizer bearing with bronze bushes
							<b>MN</b>		<b>MN</b>	reinforced, low design
							<b>MNE</b>		<b>MNE</b>	reinforced, low design equalizer bearing with bronze bushes
									<b>Hub bearing execution</b>	
							<b>ECO</b>		BPW trailer axle with ECO Unit, 1996 (1998) -	
							<b>ECO-MAXX</b>		Weight-optimized BPW trailer axle with ECO Unit, - 2003	
							<b>ECO<sup>Plus</sup></b>		Weight-optimized BPW trailer axle with ECO <sup>Plus</sup> Unit , 2003 -	
							<b>ECO Plus 2</b>		Weight-optimized BPW trailer axle with ECO Plus 2 Unit, 2007 -	
							<b>MAXX</b>		Weight-optimized BPW trailer axle with konv. hub bearing system	
							<b>ECO Cargo</b>		Running gear system as from 2013	

## 3 Explanation of BPW code numbers

### 3.1 Trailer axles and suspensions (extract)

Example:						
30.	38.	743.	000			
61.	38.	441.	001			
		1st + 2nd digit		Wheel brake		
		Axle execution	Suspension execution	Drum	Disc	
20.		Single axle without suspension parts		all	-	
21.				all	-	
22.				all	-	
23.				all	-	
24.		Single axle without suspension parts		all	all	
25.		Single axle without suspension parts		all	all	
26.		Steering axle without suspension parts		all	all	
27.		Single axle without suspension parts		all	all	
28.				all	all	
29.				all	-	
30.		Single axle without suspension parts		all	-	
31.		Single axle without suspension parts		all	-	
32.				all	-	
33.				all	-	
34.		Swivel axle		all	-	
35.		Stub axle		all	-	
36.		Steering axle without suspension parts		all	-	
38.		Single axle with monted brake cylinders		all	-	
39.				all	Ø 430	
61.				SN 420	Ø 430	
62.				SN 420	Ø 430	
63.				SN 420	Ø 430	
64.				SN 360	Ø 370	
65.				SN 360	Ø 370	
66.				SN 360	Ø 370	
67.				SN 300	-	
68.				SN 300	-	
69.				SN 300	-	
71.				SN 420	Ø 430	
74.				SN 360	Ø 370	
77.				SN 300	-	
72.				SN 420	Ø 430	
75.				SN 360	Ø 370	
78.				SN 300	-	
73.				SN 420	Ø 430	
76.				SN 360	Ø 370	
79.				SN 300	-	
98.		Suspension parts, air suspension parts without axles				
99.		Suspension parts, air suspension parts without axles				

# Explanation of BPW code numbers **3**

## Trailer axles and suspensions (extract) **3.1**

Example:						
30.	38.	743.	000			
61.	38.	441.	001			
3rd + 4th digit						
		Axle load	Roller bearings	Axle series	Year of manuf.	Remark
06.		6500 kg	33116 / 32310	H.. / K.. / N..	1982 -	Conv. bearing
08.		8000 - 9000 kg	33116 / 32310	H.. / K.. / N..	1982 -	
09.						
10.		10000 - 12000 kg	33118 / 33213	H.. / K.. / N..	1982 -	
14.		13000 - 14000 kg	32219 / 33215	H.. / K.. / N..	ab 1983	
16.		16000 - 18000 kg	32222 / 32314	H..	ab 1983	
20.		20000 kg	32224 / 32316	H..	ab 1983	
36.		6500 kg	33116 / 32310	H.. / K.. / N..	ab 1991 (ab 1992)	ECO / ECO-MAXX Unit
37.		8000 - 9000 kg	33116 / 32310	H.. / K.. / N..	ab 1991 (ab 1992)	
38.						
39.						
40.		10000 - 12000 kg	33118 / 33213	H.. / K.. / N..	ab 1991 (ab 1992)	
41.						
44.		13000 - 14000 kg	32219 / 33215	H..	ab 1994	
46.		6500 kg	33118 / 33213	H..	ab 2003	ECO <sup>Plus</sup> Unit
48.		8000 - 9000 kg	33118 / 33213	H.. / SH.. / KH.. / SKH.. / NH..	ab 2000	
49.						
50.		10000 - 12000 kg	33118 / 33213	H.. / SH.. / KH.. / SKH.. / NH..	ab 2000	
51.						
56.		6500/7000 kg	33118 / 33213	H.. / NH..	ab 2007	ECO Plus 2 Unit
58.		8000 - 9000 kg	33118 / 33213	H.. / SH.. / KH.. / SKH.. / NH..	ab 2007	
59.						
64.		6000 kg	30313 / 32309	EH..	- 1980	Conv. bearing
65.		6400 kg	33215 / 32310	KR..	1985 -	
		6500 kg	33215 / 32310	EH..	1980 - 1982	
68.		7250 kg	30315 / 32310	EH..	- 1964	
69.		8000 kg	30315 / 32310	EH..	- 1967	
71.		10000 kg	30317 / 30314	EH..	- 1967	
72.		12000 kg	33118 / 33213	EH.. 12000-2	1977 - 1982	
			32219 / 33215	EH.. 12000-1	- 1983	
			32222 / 32314	EH.. 12000	- 1983	
			32219 / 33215	ZZ.. 12010-1	- 1983	
73.		13000 / 14000 kg	32219 / 33215	EH.. 14000-1	- 1983	
				ZR.. 13000	- 1983	
74.		14000 kg	32222 / 32314	EH..	- 1983	
75.		30000 kg	32228 / 32318	M..		
76.		9000 kg	33215 / 32310	EH.. / ZR..	1967 - 1982	
80.		11000 kg	33217 / 33213	EH..	1966 - 1982	
81.		7350 kg	7350 kg	EH..	1964 - 1967	
83.		6000 kg (6300 kg)	33213 / 33209	ZR..	1967 - 1983	
84.		7350 kg	33215 / 32310	EH..	1967 - 1982	
85.		8000 kg	33215 / 32310	EH.. / ZR..	1967 - 1982	
86.		10000 kg	33217 / 33213	EH.. / ZR..	1966 - 1982	
87.		20000 kg	32224 / 32316	EH..	- 1983	
89.		16000 kg	32222 / 32314	EH..	- 1983	

# 3 Explanation of BPW code numbers

## 3.1 Trailer axles and suspensions (extract)

Example:			
30.	38.	743.	000
61.	38.	441.	001
		<b>5th + 6th digit ( Ref. number 7... )</b>	
01.		Designation trailing guide and air bag beam (ECO Air COMPACT)	<b>Execution</b>
02.			ACAU
03.			ACAM
04.			ACBM
05.			ACBO
06.			ACBU
		<b>5th - 7th digit ( Ref. number 2... / 3... / 6... )</b>	
001.	to	<b>Premounted air suspension axle without hanger brackets and air bags</b>	
099.		in the case of ref. number 61.xx.xxx.xxx - 69.xx.xxx.xxx	
		e.g. .0xx. = Premounted air suspension axle	
		.x51. = Premounted air suspension axle with trailing arm 05.082.13.51.0	
220.	to	<b>Designation of ride height and air bag version 220 to 509</b>	
509.		in the case of ref. number 61.xx.xxx.xxx - 69.xx.xxx.xxx	
		e.g. .22x. = 220 mm ride height	
		.44x. = 440 mm ride height	
		<b>Air bag type:</b>	
		.xx0. = BPW 30 (Ø 300 mm)	
		.xx1. = BPW 36 (Ø 360 mm)	
		.xx2. = BPW 36-1 (Ø 360 mm)	
		.xx3. = BPW 30-1 (Ø 300 mm)	
		.xx4. = BPW 30 K (Ø 300 mm)	
		.xx5. = BPW 36 K (Ø 360 mm)	
		.xx6. = BPW 36-2 (Ø 360 mm)	
		.xx9. = BPW 30 / 36 lose separat	
101.	to	<b>Designation of wheel brake in the case of ref. number 20. - 39...</b>	
125.		see pages 13 / 14	
501.	to		
839.			

# Explanation of BPW code numbers 3

## Trailer axles and suspensions (extract) 3.1

Example:								
30.	38.	743.	000					
61.	38.	441.	001					
		5th - 7th digit						
		Wheel brake	Dimensions	Execution	Brake lining	Year of manuf.		
101.	to	SN 4216	Ø 420 x 160	Alloy brake shoes	18 mm	- 1974		
108.								
109.	to	SN 4216	Ø 420 x 180	Alloy brake shoes	18 mm	- 1974		
116.								
117.	to	SN 4216	Ø 420 x 200	Alloy brake shoes	18 mm	- 1974		
125.								
500.		SN 3010	closed Ø 300 x 100	Brake shoes with splitted roller (BPW 95)	18 mm	1995 -		
501.		SN 3015	closed Ø 300 x 150		18 mm	1995 -		
502.		SN 3020	closed Ø 300 x 200		18 mm	1995 -		
505.		SN 3015 HWG	open Ø 300 x 150					
511.		SN 3015 KWG	closed Ø 300 x 150	Alloy brake shoes	13 mm	1966 - 1973		
512.		SN 3015 HWG	closed Ø 300 x 150					
513.		SN 3015 KWG/BA	closed Ø 300 x 150		18 mm		1973 - 1978	
518.		SN 3020 KWG	open Ø 300 x 200					
519.		SN 3020 HWG	open Ø 300 x 200					
525.		SN 3020 KWG	closed Ø 300 x 200					
526.		SN 3020 HWG	closed Ø 300 x 200					
532.		SN 5020 HWG	closed Ø 500 x 200				18 mm	
542.		SN 3616	closed Ø 360 x 160		Quick-release brake shoes wedge plates		18 mm	1985 -
545.		SN 3620 KWG	closed Ø 360 x 200					
546.		SN 3620 HWG	closed Ø 360 x 200					
551.		SN 3616 BPW 95	closed Ø 360 x 160	Brake shoes with splitted roller		18 mm		
552.		SN 3620 BPW 95	closed Ø 360 x 200		18 mm	1995 -		
581.		SN 3015-1 KWG	closed Ø 300 x 150	Brake shoes with closed anchor eye	18 mm	1978 - 1989		
582.		SN 3015-1 HWG	closed Ø 300 x 150					
583.		SN 3015-1 KWG/BA	closed Ø 300 x 150					
584.		SN 3015-1 HWG/BA	closed Ø 300 x 150					
585.		SN 3020-1 KWG	closed Ø 300 x 200					
586.		SN 3020-1 HWG	closed Ø 300 x 200					
587.		SN 3020-1 HWG/BA	closed Ø 300 x 200					
588.		SN 3020-1 KWG	open Ø 300 x 200					
589.		SN 3020-1 HWG	open Ø 300 x 200					
592.		SN 3015 HWG	closed Ø 300 x 150	Quick-release brake shoes	18 mm	1990 -		
596.		SN 3020 HWG	closed Ø 300 x 200					
609.		SB 4345	Ø 430	Disc brake		1996 - 2003		
610.		SB 3745	Ø 370					
612.		SB 3745	Ø 370					
613.		SB 4309	Ø 430					
614.		SB 4345	Ø 430					2003 - 2010
616.		TSB 3709	Ø 370	BPW ECO Disc		2010 -		
617.		TSB 4309	Ø 430					
618.		TSB 4312	Ø 430					

Definition			
SN	S-cam shaft	HWG	half-size brake camshaft
SB	Disc brake	KWG	short brake camshaft
TSB	BPW ECO Disc Trailer Disc brake	BA	with brake equalization

# 3 Explanation of BPW code numbers

## 3.1 Trailer axles and suspensions (extract)

Example:			
30.	38.	743.	000
61.	38.	441.	001
<b>5th - 7th digit</b>			
		<b>Wheel brake</b>	<b>Dimensions</b>
			<b>Execution</b>
			<b>Brake lining</b>
			<b>Year of manuf.</b>
709.		SN 4218-2 KWG open	Ø 420 x 180
710.		SN 4218-2 HWG open	Ø 420 x 180
713.		SN 4218-2 KWG closed	Ø 420 x 180
714.		SN 4218-2 HWG closed	Ø 420 x 180
717.		SN 4220-2 HWG open	Ø 420 x 200
718.		SN 4220-2 HWG open	Ø 420 x 200
722.		SN 4220-2 KWG closed	Ø 420 x 200
723.		SN 4220-2 HWG closed	Ø 420 x 200
739.		SN 4222-2 HWG closed	Ø 420 x 220
741.		SN 4212 closed	Ø 420 x 120
742.		SN 4216 closed	Ø 420 x 160
743.		SN 4218 closed	Ø 420 x 180
744.		SN 4220 closed	Ø 420 x 200
745.		SN 4222 closed	Ø 420 x 220
790.		SN 4212-2 HWG open	Ø 420 x 120
792.		SN 4212-2 HWG/BA open	Ø 420 x 120
793.		SN 4212-2 KWG closed	Ø 420 x 120
794.		SN 4212-2 HWG closed	Ø 420 x 120
796.		SN 4212-2 HWG/BA closed	Ø 420 x 120
802.		SN 4216-1 HWG open	Ø 420 x 160
806.		SN 4216-1 HWG closed	Ø 420 x 160
809.		SN 4218-1 KWG open	Ø 420 x 180
810.		SN 4218-1 HWG open	Ø 420 x 180
813.		SN 4218-1 KWG closed	Ø 420 x 180
814.		SN 4218-1 HWG closed	Ø 420 x 180
817.		SN 4220-1 KWG open	Ø 420 x 200
818.		SN 4220-1 HWG open	Ø 420 x 200
822.		SN 4220-1 KWG closed	Ø 420 x 200
823.		SN 4220-1 HWG closed	Ø 420 x 200
839.		SN 4222-1 HWG closed	Ø 420 x 220
889.		SN 4212-1 KWG open	Ø 420 x 120
890.		SN 4212-1 HWG open	Ø 420 x 120
893.		SN 4212-1 KWG closed	Ø 420 x 120
894.		SN 4212-1 HWG closed	Ø 420 x 120
896.		SN 4212-1 HWG/BA closed	Ø 420 x 120
<b>8th - 10th digit</b>			
000 to 999	Consecutive number 000 - 999		

Definition			
<b>SN</b>	S-cam shaft	<b>HWG</b>	half-size brake camshaft
<b>SB</b>	Disc brake	<b>KWG</b>	short brake camshaft
<b>TSB</b>	BPW ECO Disc Trailer Disc brake	<b>BA</b>	with brake equalization

